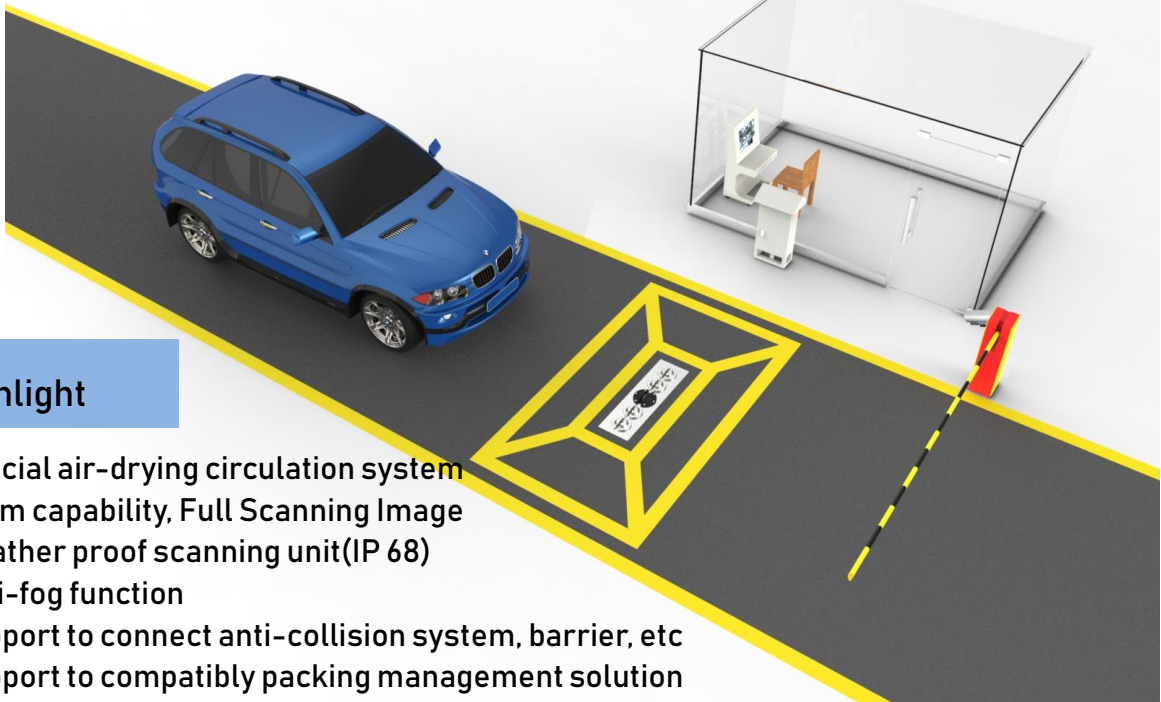


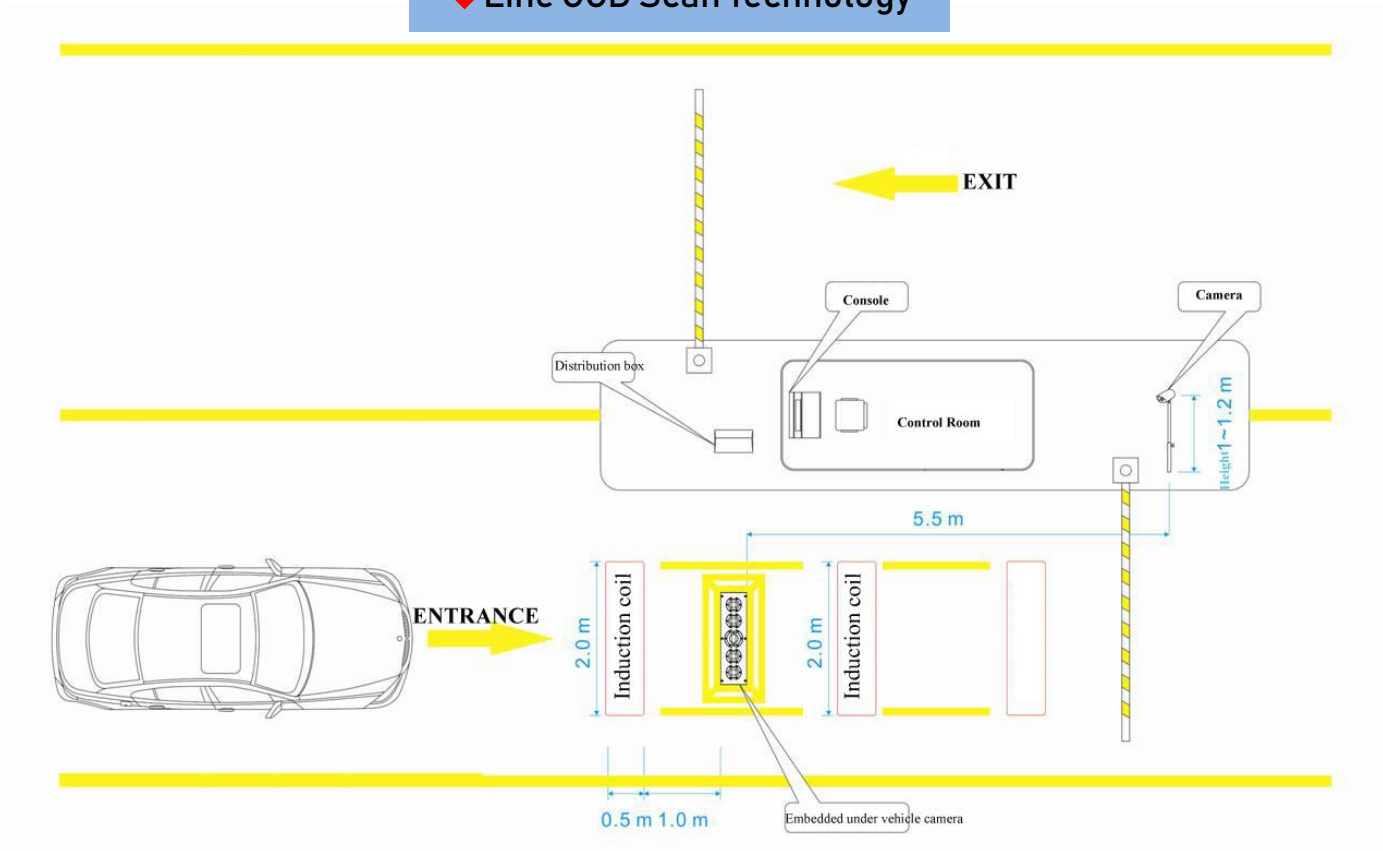
◆ SA3300 Fixed Under Vehicle Inspection System

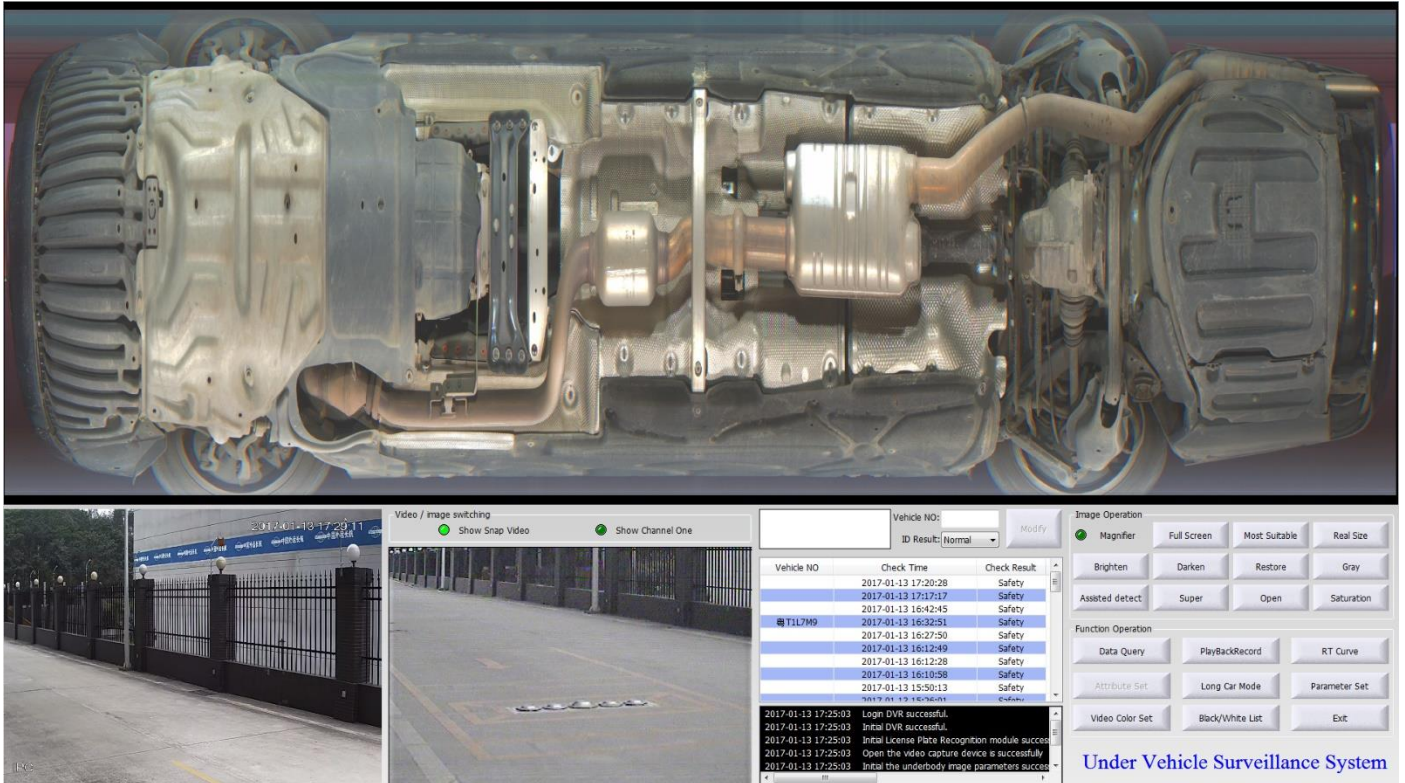


◆ Highlight

- Special air-drying circulation system
- Zoom capability, Full Scanning Image
- Weather proof scanning unit(IP 68)
- Anti-fog function
- Support to connect anti-collision system, barrier, etc
- Support to compatibly packing management solution

◆ Line CCD Scan Technology





Color Scanning imaging

◆ Specification of spare parts:

◆ Embedded screening units, Weather-proof: IP 68 (color UVSS)

- Camera: Sensor: line scans CCD,
- Resolution: 5000*2048 pixels, Power Supply: 24VDC, 3A
- Pixel : 2096 x3 ; Type:Color
- Horizontal Frequency : 9K
- Min operate time :110us
- Pixel size :14um x 14um
- The length of the line array :29mm
- Sampling bits wide :8bit
- Dynamic Range : 76db
- Sensitivity : 15,21,37V/uJ/cm2(wave length=460/540.650); Lens Mount : F
- Transmission mode : (Gigabit Ethernet) /100m
- Power Dissipation : less 8W,12V
- Working Temperature: 0°C to 60°C
- Illumination: LED, Power Supply: 24VDC,150W
- Size: 1200mm x 350mm
- Operating Temperature Range: -20 degree to +70 degree



◆ **Distribution box Controller**

- Input: 2 channels induction coil
- Output: 1 Channel switch type 12VDC
- Communication port: RS485, Ethernet(Optional)
- Operating Temperature: -10°C to 55°C



◆ **System Host**

- CPU: Intel (R) I5
- Memory: 4G (optional 8G)
- Graphics: 512M
- Hard Disk: SATA2 Hard Disk 1TB
- Dual LAN (At least one Intel Gigabit)
- USB2.0 (Up to 2 pieces)
- Monitor: 22inch LCD, resolution up to 1920*1080
- Scene Video Record: 4 channel, Compression algorithm of scene video: H264



◆ **Camera (capturing the vehicle license photo):**

- Imaging Element: 1/3 " SONY ICX673 CCD
- Pixel: 752 (H) × 582 (V)
- Signal System: PAL
- Horizontal Resolution: 700 TVL
- Electronic Shutter: 1/50—1/10,000/s
- Camera lens: f=2—22mm (Automatic aperture millions of HD camera)
- Video output: 1.0Vp-p, 75Ω
- Power supply: DC 12V
- Working temperature: -10°C—50°C
- Size: 292*140*102mm

